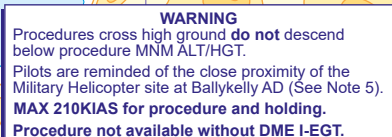


**NDB(L)/DME
RWY 26**
(ACFT CAT A,B,C,D)



Arrival not below 3500. IAF
NDB(4) EGT

MAPt I-EGT DME 1

Climb straight ahead to **600**, then turn right to track 066° continuing climb to **2500**. On reaching **2500** turn right to **NDB(L) EGT** to hold at **2500** or as directed. MAX 140KIAS (180KIAS CAT C,D) until established on track 066°.



NOTE 1 Lowest altitude to commence procedure from hold is **2500**.
2 DME not usable below **3500** between 140° and 185° due to terrain effects.
3 Seasonal bird migration may be a hazard to aircraft.
4 Approach lights to RWY 26 are over water and reflections are possible.
5 Pilots are reminded of the close proximity of disused airfield Ballykelly, 5NM east of Londonderry. Ballykelly AD has similar RWY directions and pattern to Londonderry. Pilots of aircraft en-route and in the circuit at Londonderry should positively identify Londonderry/Eglinton before committing their aircraft to land.
6 FAT offset 3.8° from RWY C/L.

AD 2-EGAE-8-9